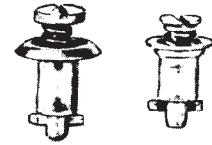


2600/2700 Series. 300 lbs. shear and tensile strength. Steel studs and washers; 212-12D receptacle copper base alloy. All parts are rated to 450°F.

Standard Slotted Head Stud Part No.	Flush Slotted Head Stud Part No.	Grip ¹
2600-2	2700-2	.060" – .089"
2600-3	2700-3	.090" – .119"
2600-4	2700-4	.120" – .149"
2600-5	2700-5	.150" – .179"
2600-6	2700-6	.180" – .209"
2600-7	2700-7	.210" – .239"
2600-8	2700-8	.240" – .269"

¹ Total thickness of all materials to be fastened, including material to which stud assembly is attached, material to which receptacle is attached, and any gaskets.



212-12D receptacle. Standard receptacle in 2600/2700 stud assemblies. Countersunk rivet holes.

Part No.	Description
212-12D	Receptacle



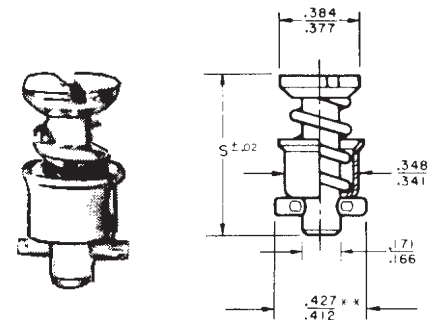
Retaining washers. Required for stud assemblies of lengths -5 and up. For maximum float where severe misalignment is anticipated use oversize .312" diameter hole for stud assembly and captivate with 2600-LW washer. Use split washer where you want the stud to fall away for minimum internal projection. Use solid washer where you want to retain the stud assembly rigidly.

Part No.	Description
2600SW2	Split washer
2600LW	Solid washer



4002 Series. 1050 lb. shear/tensile strength. Steel stud/grommets and grommet snap ring, rated to 450° F.

Part No. w/ 214-Type Receptacle and Flush Grommet	Part No. w/ 214-Type Receptacle and Plus Flush Grommet	Part No. w/ 244-Type Receptacle and Flush Grommet	Part No. w/ 244-Type Receptacle and Plus Flush Grommet	Grip
—	4002-2	4002-2	4002-3	.051" – .080"
4002-2	4002-3	4002-3	4002-4	.081" – .110"
4002-3	4002-4	4002-4	4002-5	.111" – .140"
4002-4	4002-5	4002-5	4002-6	.141" – .170"
4002-5	4002-6	4002-6	4002-7	.171" – .200"
4002-6	4002-7	4002-7	4002-8	.201" – .230"
4002-7	4002-8	4002-8	4002-9	.231" – .260"
4002-8	4002-9	4002-9	4002-10	.261" – .290"
4002-9	4002-10	4002-10	4002-11	.291" – .320"
4002-10	4002-11	4002-11	4002-12	.321" – .350"



Snap ring grommets.

Part No.	Description
4002-G	For outer panel, .064" max.
4002-H	For outer panel, .065" and up
4002-N	For outer panel, .064" max.
4002-O	For outer panel, .065" and up
R4G	Grommet snap ring, for all the above



Receptades.

Part No.	Type	Rivet	Description
214-16	Rigid	Plain rivet holes	Silicone bronze
244-16	Floating	Plain rivet holes	Steel plate and retainer; silicon bronze insert
244-16D	Floating	Dimpled rivet holes	Steel plate and retainer; silicon bronze insert



H115 installation pliers. Replaces Camloc 4P3 pliers. Use to install series 2600, 2700 and 4002 Camloc fasteners. Just compress stud spring with pliers, insert stud into panel and release.

Part No.	Description
H115	Installation pliers

