



## Sani-Cide EX3

### Broad Spectrum Disinfectant and Multi-Purpose Cleaner

#### DESCRIPTION

Sani-Cide EX3 is an EPA registered, broad spectrum disinfectant and multi-purpose cleaner that is safe to use on most surfaces including metal, plastic (including fire retardant thermoplastics), glass, mirrors, leather, fabric, and carpet. This product offers a safe and effective approach to disinfect hard surfaces while also functioning as a high performance interior cleaner.

#### TEST SPECIFICATIONS / REGISTRATIONS

Boeing BSS7434 (S/S D6-7127)  
AMS 1452C, 1550B  
US EPA Reg. No. 42048-4, Est. No. 42048-MD-1

#### PROPERTIES

VOC	0%
pH	2-3
Appearance	Thin transparent liquid
Shelf Life	24 months from date of manufacture

Sani-Cide EX3 is proven effective against the following bacteria<sup>†</sup> and viruses<sup>\*</sup>

Bacteria <sup>†</sup>	Contact Time	Pre-Cleaning Required
<i>Staphylococcus aureus</i>	3 minutes	No
<i>Salmonella enterica</i>	3 minutes	No
<i>Pseudomonas, aeruginosa</i>	3 minutes	No
Methicillin Resistant <i>Staphylococcus aureus</i>	3 minutes	No

Viruses <sup>*</sup>	Contact Time	Pre-Cleaning Required
Influenza A & B	3 minutes	No
Feline Calicivirus (surrogate for Norovirus)	3 minutes	No
Human Coronavirus	3 minutes	No
SARS-Related Coronavirus 2	3 minutes	No
SARS-Related Coronavirus 2	1 minute	Yes

#### DIRECTIONS

##### HARD SURFACE CLEANING

1. Spray Sani-Cide EX3 directly onto the surface from 6-8 inches.
2. Wipe with a clean cloth and let dry.

##### HARD SURFACE DISINFECTION

1. Pre-clean surface prior to disinfection.
2. Spray Sani-Cide EX3 directly onto the surface from 6-8 inches.
3. Allow surface to remain wet for 1-3 minutes.\*\*
4. Wipe with a clean cloth and let dry.

##### FABRIC AND CARPET SPOT CLEANING

1. Spray liberally onto the soiled spot.
2. Allow to penetrate for 5 seconds.
3. Dab with a clean cloth to remove.

Note: Concentrate product must be diluted prior to use by mixing 1 part Sani-Cide EX3 Concentrate to 9 parts water.

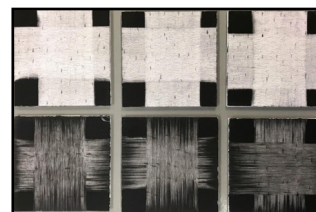
\*\*Please see product label for full Directions of Use.



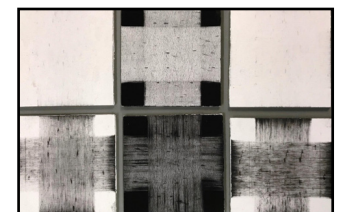
LS-SCIDEX3/QT

#### FEATURES

- Biodegradable and water based
- Non-toxic and non-corrosive
- Contains no quaternary ammonium compounds or VOCs
- Highly effective soil removal with minimal soil redeposition
- Sani-Cide EX3 has demonstrated effectiveness against viruses similar to monkeypox virus on hard, non-porous surfaces. Therefore, Sani-Cide EX3 can be used against monkeypox virus when used in accordance with the directions for use against Feline calicivirus on hard, non-porous surfaces. Refer to the CDC website at <https://www.cdc.gov/poxvirus/monkeypox/index.html> for additional information.
- Safe for use on glass, mirrors, metal, plastic (including fire retardant thermoplastics), leather, fabric, and carpet
- Effective disinfection against SARS-CoV-2, Human norovirus, Influenza A, Influenza B, *Staphylococcus aureus*, *Salmonella enterica*, *Pseudomonas, aeruginosa*, and Methicillin Resistant *Staphylococcus aureus*



Cleaning study using Celeste Sani-Cide EX3 (top) and leading quat based disinfectant (bottom). Study shows superior cleaning quality.



Soil redeposition cleaning test using Celeste Sani-Cide EX3 (top) and leading quat based disinfectant (bottom). Sani-Cide EX3 cleans and encapsulates the soil while competitor smears the soil around.

Celeste Part #	Description	Case Specification	Pallet Specification
LS-SCIDEX3/6	12 x 6 oz. bottles per case	8 x 6 x 7 in, 6 lbs (20 x 15 x 18 cm, 3 kg)	36 cases x 7 layers, 57 in (145 cm) height
LS-SCIDEX3/QT	12 x quart bottles per case	14 x 11 x 11 in, 30 lbs (36 x 28 x 28 cm, 14 kg)	11 cases x 4 layers, 53 in (135 cm) height
LS-SCIDEX3/GL	4 x gallon jugs per case	13 x 13 x 12 in, 36 lbs (33 x 33 x 30 cm, 16 kg)	9 cases x 3 layers, 57 in (145 cm) height
LS-SCIDEX3/55	55 gallon drum	36 x 23 in, 470 lbs (91 x 58 cm, 213 kg)	4 drums x 1 layer, 42 in (107 cm) height
CC-SCIDEX3/5	5 gallon pail - Concentrate	12 x 10 x 15 in, 43 lbs (30 x 25 x 38 cm, 20 kg)	16 pails x 2 layers, 36 in (91 cm) height